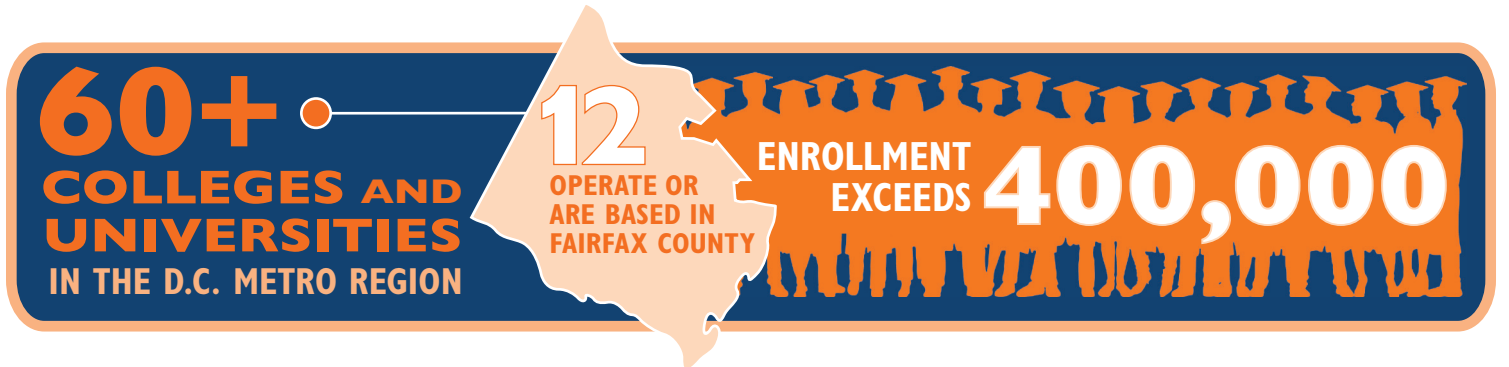


# FAIRFAX COUNTY, VIRGINIA

## Colleges and Universities



Fairfax County employees and companies have access to a wide range of regional educational institutions, ranging from liberal arts colleges to major research institutions. The county is home to George Mason University, Virginia's largest public university, and Northern Virginia Community College, one of the nation's largest community colleges. The University of Virginia and Virginia Tech each have a major presence in the county at the Northern Virginia Center.



### KEY

#### Degrees Offered:

M	Master's	MD	Doctor of Medicine
A	Associate	DDS	Doctor of Dental Surgery
B	Bachelor's	J	Juris Doctor
		C	Certificate (Pre- and Post-Baccalaureate)

**Institutions in bold have locations in Fairfax County**

College/University	Enrollment	Web Site	Degrees
American University	12,300	<a href="http://www.american.edu">www.american.edu</a>	A, B, M, D, J, C
American Military University	N/A	<a href="http://www.amu.apus.edu">www.amu.apus.edu</a>	A, B, M, C
Anne Arundel Community College	13,900	<a href="http://www.aacc.edu">www.aacc.edu</a>	A, C
Argosy University	N/A	<a href="http://www.argosy.edu">www.argosy.edu</a>	B, M, D, C
The Art Institute of Washington	N/A	<a href="http://www.artinstitutes.edu/arlinton">www.artinstitutes.edu/arlinton</a>	A, B, C
Bethel Seminary of the East	N/A	<a href="http://www.bethel.edu">www.bethel.edu</a>	M, C
Bowie State University	5,700	<a href="http://www.bowiestate.edu">www.bowiestate.edu</a>	B, M, D, C
Capitol Technology University	770	<a href="http://www.captechu.edu">www.captechu.edu</a>	A, B, M, D, C
Catholic University of America	6,500	<a href="http://www.cua.edu">www.cua.edu</a>	A, B, M, D, J, C
Central Michigan University	N/A	<a href="http://www.cel.cmich.edu/DC">www.cel.cmich.edu/DC</a>	M, C
Chamberlain College of Nursing-Virginia	N/A	<a href="http://www.go.chamberlain.edu">www.go.chamberlain.edu</a>	B
The Chicago School of Professional Psychology at Washington DC	N/A	<a href="http://www.thechicagoschool.edu/washington-dc">www.thechicagoschool.edu/washington-dc</a>	B, M, D, C
Christendom College – Notre Dame Graduate School	90	<a href="http://www.christendom.edu">www.christendom.edu</a>	M, C
College of Southern Maryland	7,400	<a href="http://www.csmd.edu">www.csmd.edu</a>	A, C
DeVry University	N/A	<a href="http://www.devry.edu">www.devry.edu</a>	A, B, M, C
Divine Mercy University	150	<a href="http://www.divinemercury.edu">www.divinemercury.edu</a>	M, D
Dominican House of Studies	120	<a href="http://www.dhs.edu">www.dhs.edu</a>	M
ECPI University	N/A	<a href="http://www.ecpi.edu">www.ecpi.edu</a>	A, B, C
Everest College	N/A	<a href="http://www.everest.edu">www.everest.edu</a>	A, C
Florida Institute of Technology	30	<a href="http://www.fit.edu">www.fit.edu</a>	M, C
Frederick Community College	6,300	<a href="http://www.frederick.edu">www.frederick.edu</a>	A, C
Gallaudet University	1,500	<a href="http://www.gallaudet.edu">www.gallaudet.edu</a>	B, M, C, D
<b>George Mason University</b>	35,200	<a href="http://www.gmu.edu">www.gmu.edu</a>	B, M, D, J, C
George Washington University	22,900	<a href="http://www.gwu.edu">www.gwu.edu</a>	A, B, M, D, J, MD C
Georgetown University	18,500	<a href="http://www.georgetown.edu">www.georgetown.edu</a>	B, M, D, J, MD, C
Germanna Community College	7,000	<a href="http://www.germanna.edu">www.germanna.edu</a>	A, C
Hood College	2,100	<a href="http://www.hood.edu">www.hood.edu</a>	B, M, C
Howard Community College	9,700	<a href="http://www.howardcc.edu">www.howardcc.edu</a>	A, C

continued ➔

## FAIRFAX COUNTY ECONOMIC DEVELOPMENT AUTHORITY

College/University	Enrollment	Web Site	Degrees
Howard University	10,000	www.howard.edu	B, M, D, J, DDS, MD, C
IGlobal University	290	www.igu.edu	B,M,C
Institute of World Politics	110	www.iwp.edu	M,C
Johns Hopkins University	23,900	www.jhu.edu	B, M,D, MD, C
Lanncaster Bible College	N/A	www.lbc.edu	A, B, M, C
Lord Fairfax Community College	7,000	www.lfcc.edu	A, C
Maple Springs Baptist Bible College and Seminary	N/A	www.msbbcs.edu	M, D, C
Maryland University of Integrative Health	1,400	www.muih.edu	M, D, C
<b>Marymount University</b>	3,400	www.marymount.edu	B, M, D, C
Missouri State University (Department of Defense and Strategic Studies)	N/A	www.dss.missouristate.edu	M, C
Montgomery College	23,900	www.montgomerycollege.edu	A, C
Mount St Mary's University	2,300	www.msmary.edu	B, M, C
National Graduate School of Quality Management	N/A	www.ngs.edu	D
<b>Northern Virginia Community College</b>	52,100	www.nvcc.edu	A, C
Park University	N/A	www.park.edu/virginia	A, B
<b>Pontifical John Paul II Institute for Studies on Marriage and Family</b>	N/A	www.johnpaulii.edu	M, D, C
Prince George's Community College	12,400	www.pgcc.edu	A, C
St. John's College	490	www.sjc.edu	B, M
St. Mary's College of Maryland	1,700	www.smcm.edu	B, M, D, C
<b>Stratford University</b>	N/A	www.stratford.edu	A, B, M, C
<b>Strayer University</b>	N/A	www.strayer.edu	A, B, M, C
Trinity Washington University	2,300	www.trinitydc.edu	A, B, M
U.S. Naval Academy	4,500	www.usna.edu	B
University of Management and Technology	N/A	www.umtweb.edu	A, B, M, D
University of Mary Washington	4,700	www.umw.edu	B, C
University of Maryland-College Park	39,000	www.umd.edu	B, M, D, C
University of Maryland-University College	57,000	www.umuc.edu	A, B, M, D, C
<b>University of North America</b>	500	www.uona.edu	M
University of Oklahoma	N/A	www.ou.edu/outreach/ap	M
<b>University of Phoenix</b>	N/A	www.phoenix.edu	A,B, M, D, C
University of the District of Columbia	5,400	www.udc.edu	A, B, M, D, J, C
<b>University of the Potomac</b>	N/A	www.potomac.edu	A, B, M, C
<b>University of Virginia – Northern Virginia Center</b>	2,800	www.scps.virginia.edu	B, C
<b>Virginia International University</b>	1,900	www.viu.edu	B, M, C
<b>Virginia Tech – Northern Virginia Center</b>	600	www.nvc.vt.edu	M, C
Washington Adventist University	1,100	www.wau.edu	A, B, M, C
Webster University	N/A	www.webster.edu/dcmetro	M
Wesley Theological Seminary	670	www.wesleyseminary.edu	M, D, C

**N/A:** Educational institution did not provide enrollment information

**Note:** Enrollment figures reported are the most current figures reported by reporting agency or academic institution.

**Sources:** Maryland Higher Education Commission, State Council of Higher Education in Virginia and individual colleges and universities

February 2017

## FAIRFAX COUNTY

### ECONOMIC DEVELOPMENT AUTHORITY